

Partnering for progress: Health system achieves NIH research success via program management approach

The vision

The University of Pittsburgh (Pitt) regularly applies for and manages multiple large-scale, multi-institution research programs. Each program must meet specific aims while working with limited budget and resources across dozens of partner institutions. Research leaders increasingly needed a strategic program management approach to deliver timely results and remain competitive for future funding considerations.

Co-creating the solution

Pitt partnered with Chartis to operationalize three large research programs, beginning with grant applications. The team created plans to demonstrate professionalized program management approaches that satisfied new federal requirements to qualify for funding.

The team implemented unique governance structures, protocols, communication platforms, and National Institutes of Health (NIH) reporting structures to mobilize research teams. Chartis served as the primary liaison between Pitt, the funding agencies, and other participating institutions.

Believe in better

The team designed each large-scale program with the structure, processes, and support to succeed. Programs emphasized effective communication methods and enhanced internal and external collaboration. As a result, they met or exceeded defined aims within budget and on time. They also published multiple papers. This effective operationalization enhanced Pitt's reputation as a top NIH research institute and provided a platform to secure additional funding.

Meaningful outcomes

The demonstrated success in each initial funding period set up Pitt for further success:

\$123.4M

of additional cumulative funding across three programs

10 years

of multiple funding extensions

Top 10

NIH funded institution year over year

Building to better

Successfully operationalizing clinical research programs allows institutions to:

DEVELOP COMPETITIVE ADVANTAGES

for future funding opportunities

ESTABLISH TAILORED OPERATIONS

for complex work across institutions

ENHANCE STANDARDS OF CARE

by bringing rigor to research operations

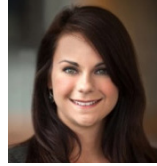
Authors



Vincent D'Itri

Partner

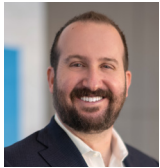
vditri@chartis.com



Elaina Sendro Gano

Associate Partner

esendro@chartis.com



Jake Schreiber

Associate Partner

jschreiber@chartis.com



The challenges facing US healthcare are longstanding and all too familiar. We are Chartis, and we believe in better. We work with over 900 clients annually to develop and activate transformative strategies, operating models, and organizational enterprises that make US healthcare more affordable, accessible, safe, and human. With over 1,000 professionals, we help providers, payers, technology innovators, retail companies, and investors create and embrace solutions that tangibly and materially reshape healthcare for the better. Our family of brands—Chartis, Jarrard, Greeley, and HealthScape Advisors—is 100% focused on healthcare and each has a longstanding commitment to helping transform healthcare in big and small ways.

© 2025 The Chartis Group, LLC. All rights reserved. This content draws on the research and experience of Chartis consultants and other sources. It is for general information purposes only and should not be used as a substitute for consultation with professional advisors.